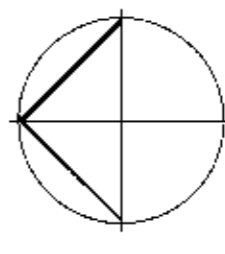
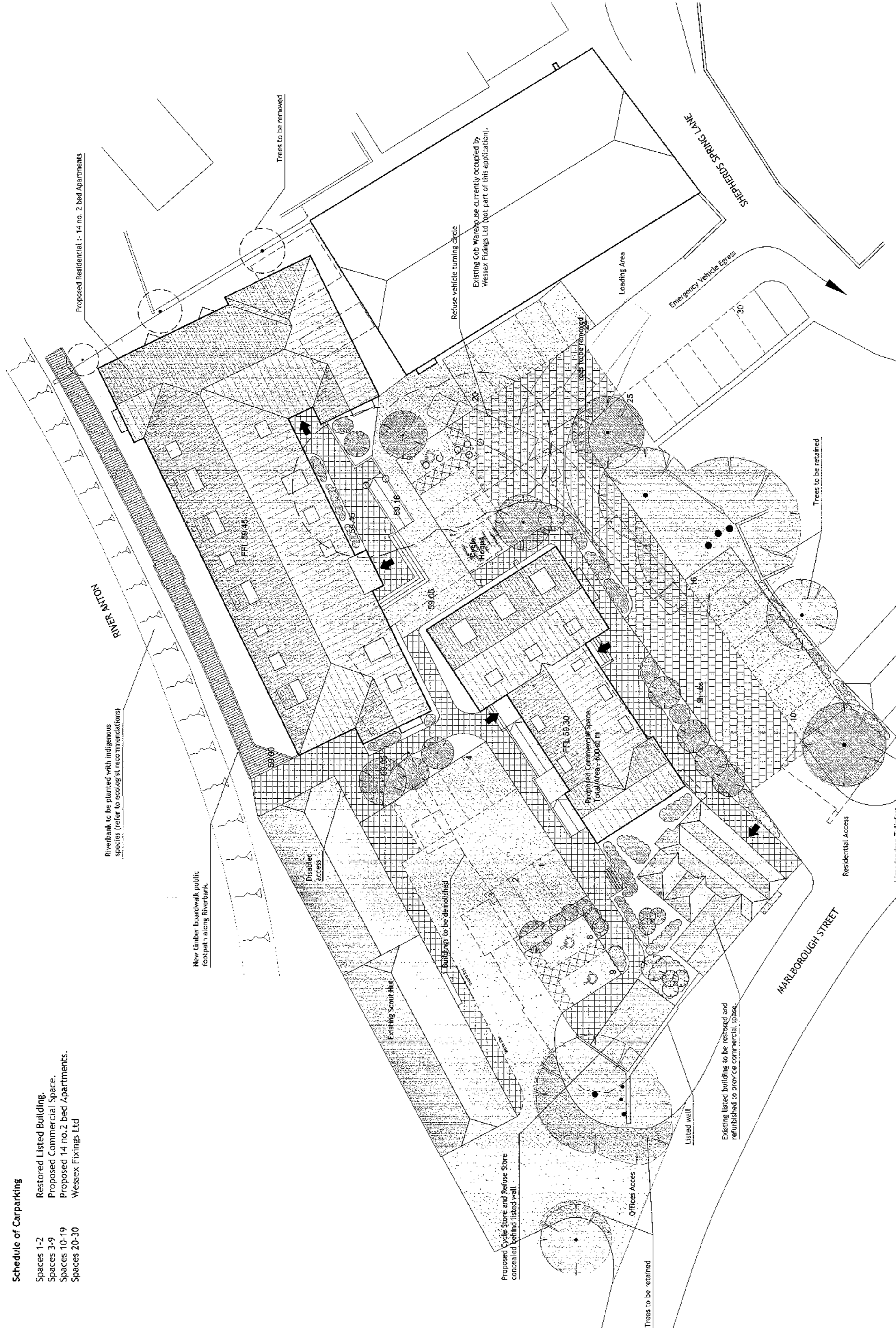
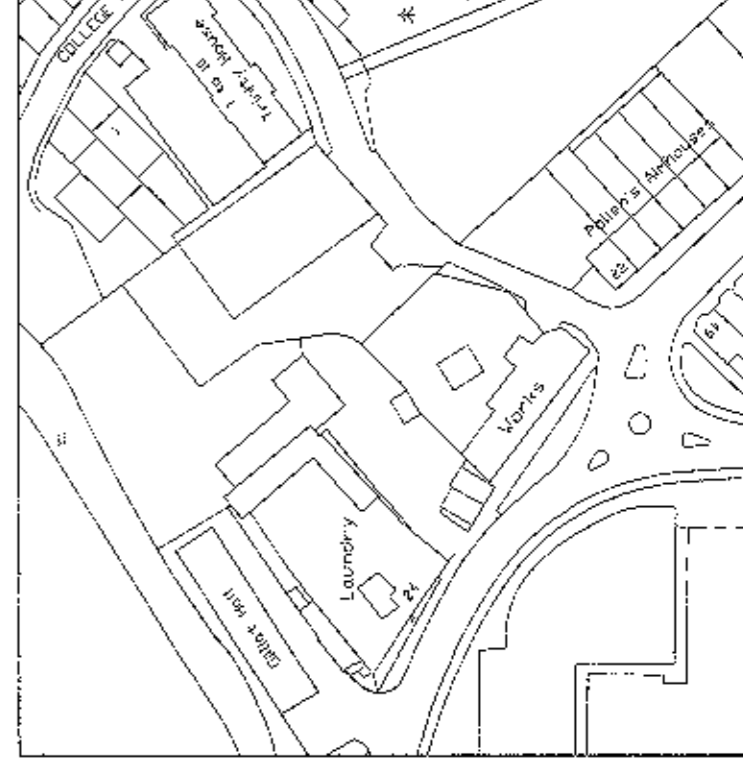


- Schedule of Carparking**
- Restored Listed Building.
 - Proposed Commercial Space.
 - Proposed 14 no. 2 bed Apartments.
 - Wessex Fixings Ltd

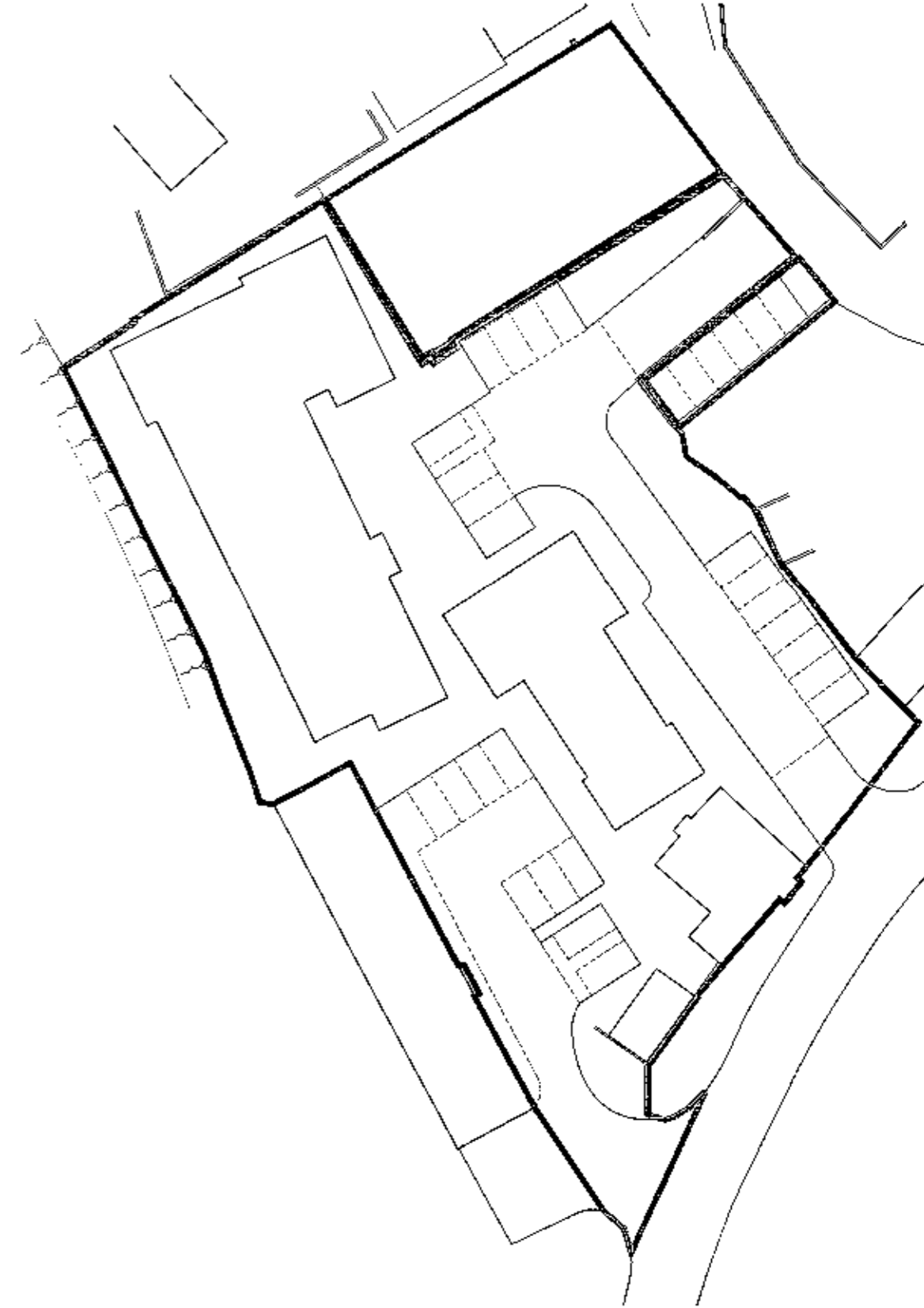
- Spaces 1-2
- Spaces 3-9
- Spaces 10-19
- Spaces 20-30



Site Plan
Scale 1:200

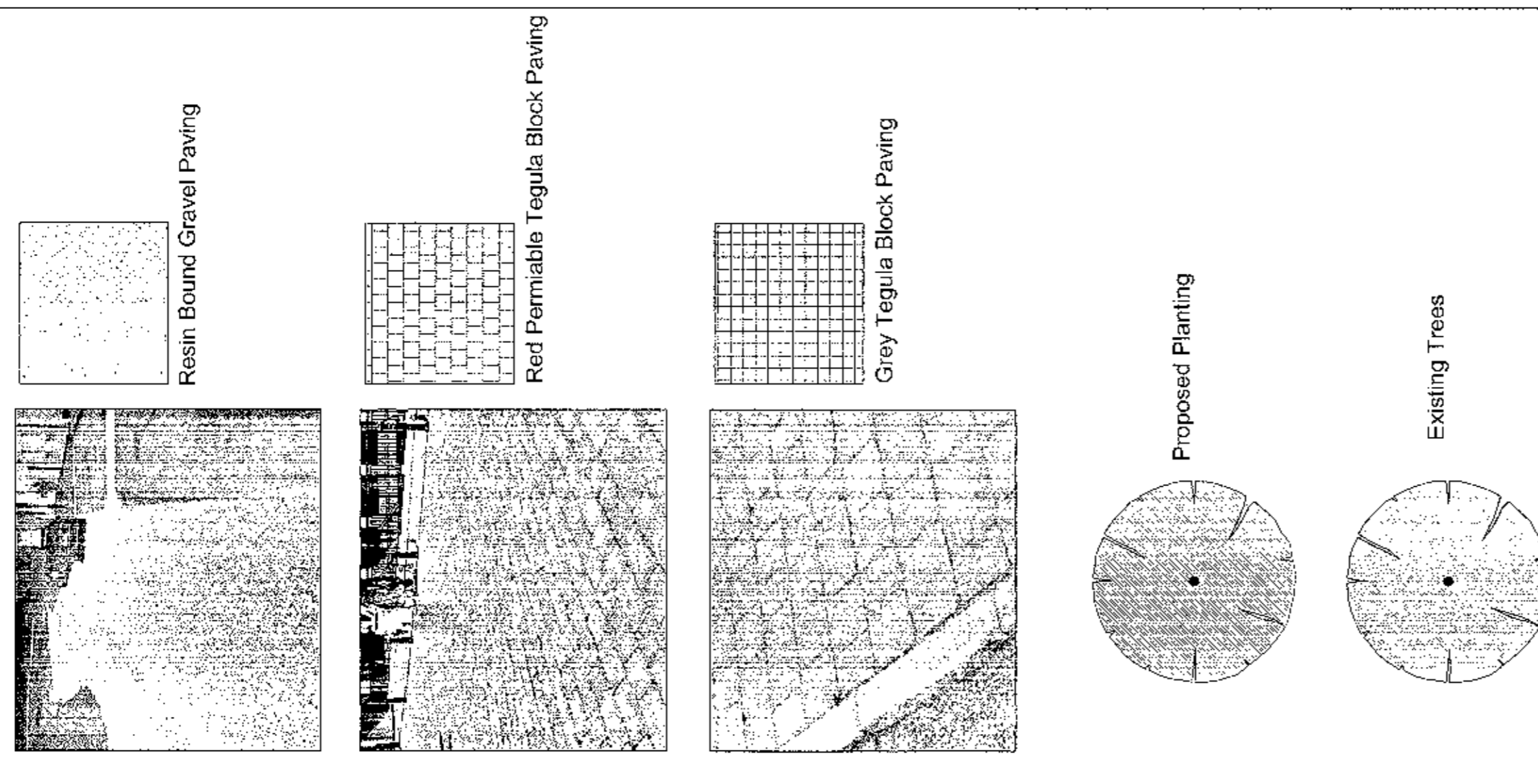


Location Plan
Scale 1:1250



Block Plan
Scale 1:500

Legend



REVISIONS

No.	Description
A	Bay window added.

WEST VALLEY COUNCIL
PLANNING SERVICE
Application No. P/16/1968
Area: 0.25 ha of 1:200
Decision

This drawing is the copyright of Williams Lester Architects. It may not be reproduced or used in any way without their written authority. Do not scale drawings, work to figured dimensions, or copy drawings without the written authority of the architect immediately.

WILLIAMS • LESTER
CHARTERED ARCHITECTS
PLANNING & CONSERVATION CONSULTANTS
2 Palace Business Park, Palace Way
Riverside, Reading, RG1 1BB
Tel: 0118 936 1000
www.williamslester.com

Cavendish & Gloucester

Marlborough Street
Andover
Laundry Site

Proposed Site Plan,
Block Plan &
Location Plan

Scale	VARIOUS	Date	MAY07
Drawn	DW	Checked	JC
Drawn by	2543-PL-201		
Rev.	A		

Note
Listed Building restoration to form separate but concurrent application (see dwg's 2543-LBC-301-302)